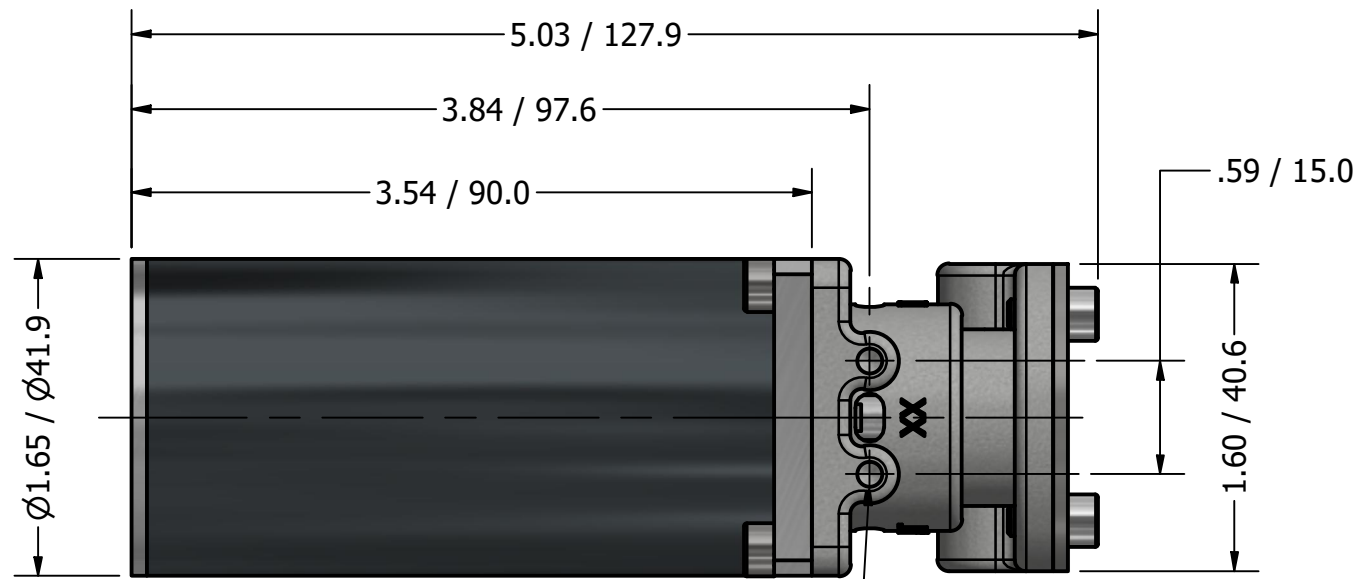
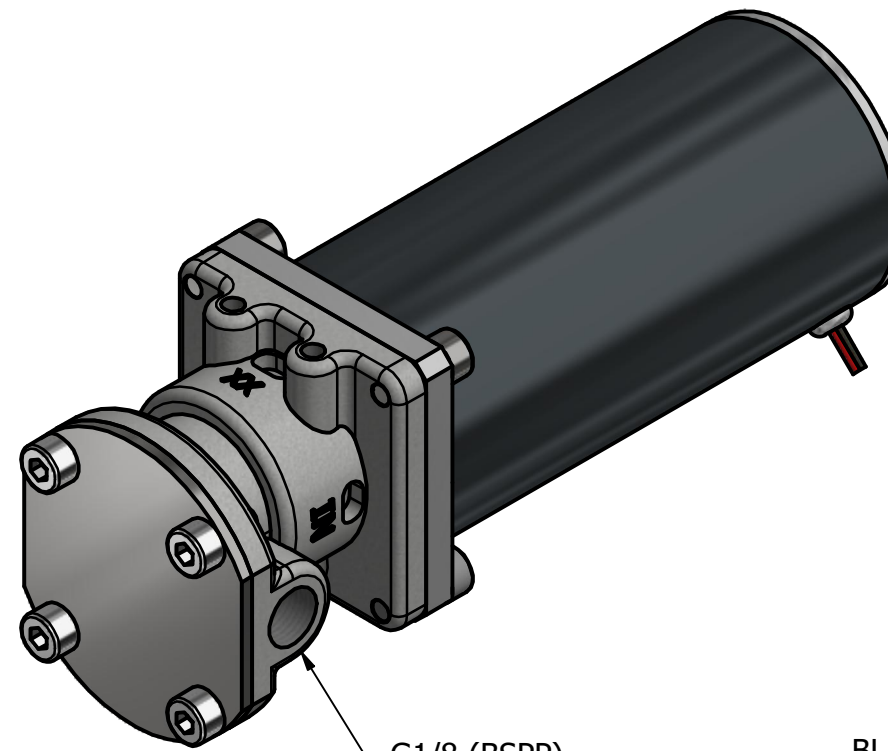


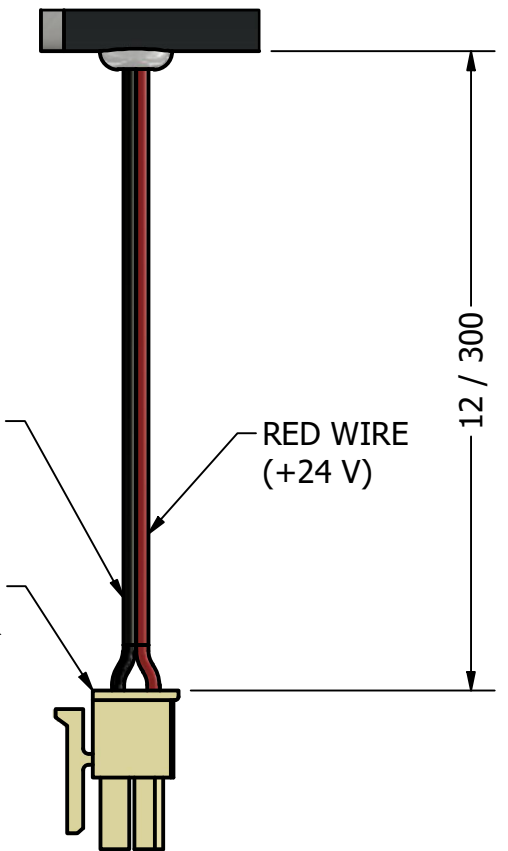
**MICRO GEAR PUMP
20 WATT MOTOR
G1/8 (BSPP) PORTS**



M4 X 0.7 X .236± .01 / 5.99± 0.3 DEEP
2 PLCS



G1/8 (BSPP)
INLET/OUTLET PORTS



BLACK WIRE
(0 V)

RED WIRE
(+24 V)

MOLEX MICRO-FIT 3.0
CONNECTOR

